

Central Scene

The Monthly Newsletter of Central Presbyterian Church, Pine Bluff, Arkansas

October 2013

The 2013 Stewardship Campaign is Underway!

Share God's Blessings!

Sunday, October 20th is Stewardship Sunday for our church.

During the Fellowship Lunch, pledge cards will be distributed for planning the 2014 budget.

As you prayerfully consider your support for our ministries next year, be generous with your time, talent and treasures.

Share God's Blessings because God has created us and cares how we live our lives. His Son, Jesus of Nazareth, lived among us to show how we should love. God expects us to respond to such incredible love in thankful and loving service.

Share God's Blessings and you will be putting God first and at the center of your life.

Jesus tells a parable about talents which teaches that God is pleased when we are bold enough to enhance the gifts entrusted to our care in order to build up God's kingdom.

Share God's Blessings because all things are possible with God!

2013 Stewardship Campaign Schedule

Sunday 10/13/13	Challenge budget distributed to Session members.
Tuesday 10/15/13	Mail stewardship letter to congregation.
Sunday 10/20/13	Budget Chairman reports preliminary budget proposal to Session. Session reviews and finalizes challenge budget.
Sunday 10/20/13	STEWARDSHIP DEDICATION SUNDAY Sunday afternoon Stewardship Luncheon (following worship). Pledge cards received. Non-pledging family units identified for pledge card mailing.
Sunday 11/3/13	Budget committee tallies signed pledge cards.
Sunday 11/10/13	Budget Committee reviews pledges and prepares final budget report for Session.
Sunday 11/17/12	Session adopts 2014 Budget.
Sunday 11/24/13	Christ the King Sunday/Last Sunday before Advent Announce the 2014 Budget and consecrate the pledges



Central Presbyterian Church
6300 Trinity Drive
P.O. Box 1105
Pine Bluff, AR 71613

...a congregation of the Presbyterian Church
(U.S.A.) through the Synod of the Sun and the
Presbytery of Arkansas.

Directory

Office Phone Number (870)879-9074

E-mail:
centralpc@cablelynx.com

Website:
www.centralprespb.com

Pastor:

Choirmaster/Organist: Marty Shell

Secretary: Erin Shaw

Treasurer: Connie Detmers

Clerk of the Session: Laura Pierce

Presbyterian Women Moderator: Betty Coles

Nursery Attendant: Laura Cosner

Youth Sponsors: Marty Shell
George Mosley
Amber Poss

SESSION

<u>Class of 2013</u>	<u>Class of 2014</u>
Lawrence Fikes	Bill Detmers
Steven Howsen	Jo Weaver
George Mosley	Pat Drewett
Dana Neal	Lan Kelley
Laura Pierce	Tommy Dunlap

CHURCH MEMBERSHIP

Membership in Central Presbyterian Church is open to all who profess faith in Jesus Christ as Lord and Savior. New members will be received upon baptism and profession of faith, reaffirmation of faith, or by letter of transfer.

Neighbor to Neighbor's Holiday Projects

As we prepare for the holiday season at Neighbor to Neighbor, we are reminded of the importance of the support that Central and other churches give to us throughout the year, and we are most grateful. Hopefully, we can count on your church again to help us assist the less fortunate in our community to have a joyful Thanksgiving and Christmas holiday. I hope Central can help by providing the following food items:

<u>Food Item</u>	<u>Quantity</u>	<u>Dates Needed</u>
Cranberry Sauce	100	November 4
Cranberry Sauce	100	December 2

**NOTE: these are suggested items, but any and all quantities will be appreciated.*

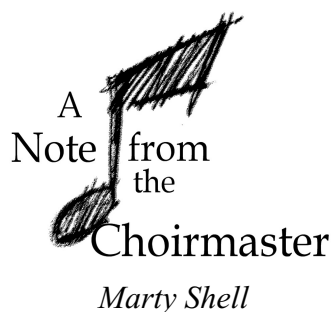
We would also like for your church to consider sponsoring 10 (or more) children during Christmas. A cash donation of \$60.00 per child would ensure that these children wake up Christmas morning with toys under their tree.

Thank you for all the support you give Neighbor to Neighbor. The needs are great, and we are indeed grateful for your help. If you have any questions about the holiday schedule or items that we have requested, please contact me at 534-2883 or by email at neighbor2neighbor@sbcglobal.net.

God be with you,

Charlotte England
Executive Director





Thank you for letting us be casual during the month of August!! It allowed us to be a bit cooler during the hotter months. With the arrival of Fall, the robes will be going back on, but we are thankful for the opportunity to be more comfortable during the summer months.



Dear Central Friends & Family,

As I am sure you have noticed, we did not issue a September issue of the Central Scene. Unfortunately, we experienced a computer crash in the church office in mid-August, and it took us a while to get everything up and running again.

We certainly hope everyone enjoyed the Labor Day weekend. Now it is time to begin work on our Christmas Cantata. If you would like to join us, we would be delighted. We are always looking for more folks to share their musical talents with us. If singing isn't your cup of tea, but you would rather play an instrument or help us with hand bells... We NEED you!!

If you have a favorite hymn, please let one of the choir know. We would love to share these selections during this time. Remember to pray for our church as we begin the journey and search for a new leader. While we regret the departure of the Festa's, we wish them the best in their new adventure.

Marty

"Trunk or Treat"

On Sunday, October 27, Central will host "Trunk or Treat" for Halloween. Starting at 6:00 p.m., our cars will be parked around the parking lot with the trunks open. Children will then visit each trunk to receive treats. This isn't just for the little kids; big kids are welcome, too! All are invited to come and join us for games, food and fellowship. Put on your favorite costume or come as you are, and join the fun!

We are still working out a few kinks, but we should have everything fixed and updated in the very near future. Thanks for your patience and understanding during this transition.

Sincerely,

Erin Shaw,
Secretary

Dear Central Friends & Family,

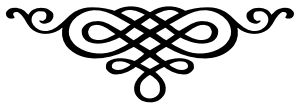
Thank you all for the wonderful donations to Salvation Army and CASA. We were able to deliver a very large basket of women's and men's toiletries to help these wonderful organizations in our own community.

With hot weather and summer leaving us soon, (Whew!), we need to start looking toward the Fall weather when more items will be needed as more people come inside from the cold weather. Please remember to continue bringing any toiletries- shampoo, soap, razors, toothbrushes, paste, etc. for those in need, and place them in the yellow boxes in McEleya Hall. If you have any sheets or blankets that you no longer need, those items are also in demand during the winter.

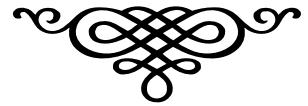
God Bless,

Pat Drewett and Jo Weaver
Co-chairs, Mission & Outreach Committee





Gifts to the Church



In Loving Memory of Ruby Orgain Carey

Mr. and Mrs. Hans Paulsen-Undesignated

In Loving Memory of Carl Purnell

Bill VonTungeln-Vera Lloyd

A Call to Serve

Ruth M. Walsh wrote: “I was naked, and you questioned my lack of modesty in my appearance. I was imprisoned, and you debated the legal aspects of interference. I was penniless, and you discussed tax-deductible donations from your wealth. I was sick, and you thanked the Lord for the blessings of your health. I was hungry, and you formed a committee to study malnutrition. I was homeless, and you said God’s love was shelter under any condition. I was lonely, and you left me by myself while you and your friends prayed. You seem so holy and close to God, yet I’m still sick and alone and afraid!”

By contrast, in the parable of the sheep and the goats, Jesus says, “Truly I tell you, just as you did it to one of the least of these who are members of my family, you did it to me” (Matthew 25:40, NRSV). When we fail to serve our neighbors, we fail to serve Jesus. Yet when we feed the hungry, we’re actually feeding Jesus. When we visit the sick, we’re actually visiting Jesus. And when we love one another, we’re actually loving Jesus.

God’s Highly Valued Investment

Someone once asked IBM founder Thomas Watson if he would fire an employee who made a mistake that cost the company \$60,000. To the questioner’s surprise, Watson replied, “Why would I fire someone in whom I’ve invested \$60,000 in training?”

Neither will God “fire” or in any way dismiss us for our mistakes and failures. He has invested far too much — even his own Son’s life! — in each of us for that.

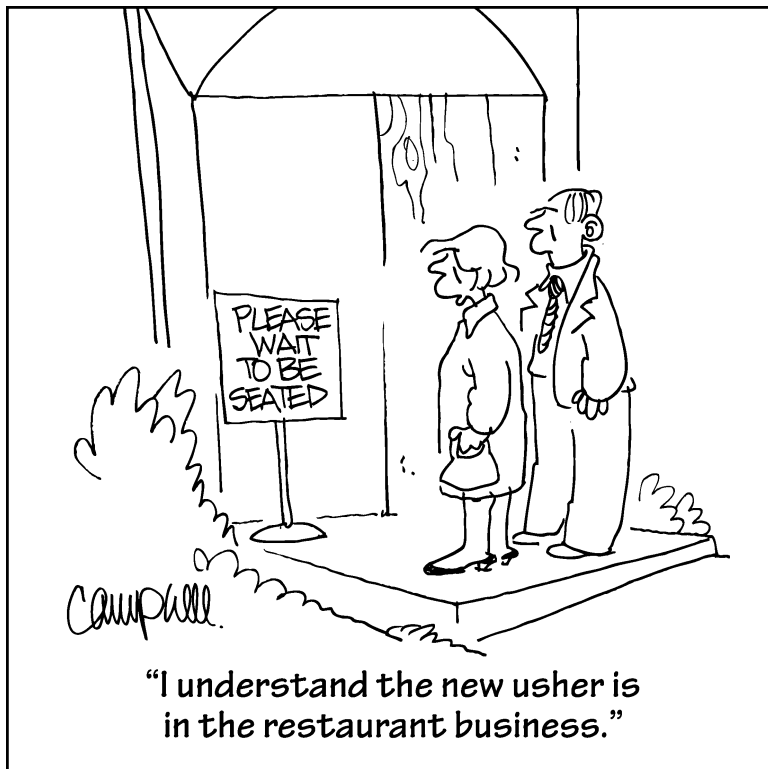
Don’t hold back for fear of failure. Serve the Lord boldly. Try something new for the sake of the Gospel, and when you make a mistake, bring it honestly to God in prayer. Be open to the Holy Spirit, who provides “continuing education” — in Scripture, through other Christians and by connecting directly with your heart — to improve your skills and gifts every day.

What We’d like to Hear in Church

- ▶ Hey, it’s my turn to sit in the front pew!
- ▶ I was so enthralled, I never noticed your sermon ran longer than usual.
- ▶ I’ll volunteer to be the permanent junior high Sunday school teacher.
- ▶ I love it when we sing hymns I’ve never heard before.
- ▶ Because we’re all here, let’s start the worship service early.
- ▶ Pastor, we’d like to send you to this Bible seminar in the Bahamas.
- ▶ Nothing inspires me and strengthens my commitment like our annual stewardship campaign.



The newsletter deadline for the **November** issue of **Central Scene** is **Monday, October 21**. Please turn in all articles, announcements, and meeting dates to the church office by the end of the day.



Important Dates October

- 06** **World Communion Sunday**
 Peacemaking Offering received
 Blue Moon Hamburger/Hot dog
 Cookout & Bingo Night - 5:30 p.m.. -
 McElyea Hall
- 08** **Morning Circle:** 10 a.m. - Perdue
 Library
- 11** **Trip:** The Village - Star City, AR -
 5:30 p.m.
- 14** **Columbus Day** - Office Closed
 Evening Circle: 6:30 p.m. - Perdue
 Library
- 19** **Susan G. Komen Race for the Cure**
 Little Rock, AR
- 20** **Stewardship/Harvest Fellowship**
 Luncheon - following worship -
 McElyea Hall
 Session - 3 p.m. - conference room
- 21** **Newsletter Deadline**
- 27** **Trunk or Treat** - 6 p.m.

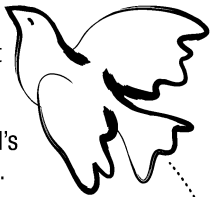
Youth News

When summer begins, we joyfully look forward to vacations, outdoor activities, or just floating in the pool. Much of this comes to an end with the beginning of school. Yet, as the school year unfolds, we anxiously anticipate some joys therein, as well. In the spirit of that anticipation, our youth advisors are meeting regularly to develop our schedule for the coming year. We plan to move forward with activities that provide new and exciting opportunities to learn and expand the outreach of our faith. Be sure to watch your weekly bulletins and upcoming issues of the *Central Scene* for updates as we unveil our plans for the Fall season.



GROW IN Grace

Make this craft as a reminder to continue growing in God's amazing grace.



What you need:

- An adult to help
- Newspaper
- Acrylic paints
- Paper plate
- Paintbrush
- Small terra cotta pot and plate
- Cup of water
- Permanent black marker
- Potting soil
- Small "indoors" plant or packet of seeds

What you do:

1. Cover your work area with newspaper and squeeze paint onto the paper plate.
2. Paint designs on the pot and plate, cleaning your brush in the water when changing colors. Let dry.
3. With the black marker, write "Growing in God's Grace" along the top ridge of the pot.
4. Pour in a small amount of soil. Place your plant in the pot and surround it with more soil. (If planting seeds, follow packet instructions.)
5. Water your plant. Check it daily and keep the soil moist.
6. Enjoy watching your plant grow!



Growing up!

You're growing each day in many different ways. A verse from 2 Peter tells what will help you grow!

Directions: Fill in the blanks below, using the height measurements as guides, to complete 2 Peter 3:18.

3 1/4 ft.	knowledge		Savior	3 1/8 ft.
3 1/16 ft.	him		grace	3 ft.
2 3/4 ft.	now		forever	2 1/2 ft.
2 1/4 ft.	Lord		grow	2 1/8 ft.
2 1/16 ft.	glory		Jesus Christ	1 1/4 ft.
2 ft.	Amen			
1 ft.	our			

"But _____ in the _____ and _____ of _____
 _____ and _____.
 To _____ be _____ both _____ and _____ ! _____."
 3 1/16 ft. 2 1/16 ft. 2 3/4 ft. 2 1/2 ft. 2 ft.

2 PETER 3:18, NIV

Answer: "But grow in the grace and knowledge of our Lord and Savior Jesus Christ. To him be glory both now and forever! Amen." 2 Peter 3:18, NIV

Central Presbyterian Church
P.O. Box 1105
Pine Bluff, AR 71603

Non-Profit Organization
U.S. Postage Paid
Pine Bluff, AR
Permit #514

Return Service Requested



03 Raymond Turner	14 Greer Cromwell
05 Mary Wooten	17 Lauren Fikes
05 Laura Pierce	19 Agnes Hughes
05 Amber Poss	22 Betty Coles
17 Fletcher Perdue	30 Billy VonTungeln
14 Laura Hayes	

Celebrating 
An Anniversary This Month

18 Mr. and Mrs. Rich Cromwell
29 Mr. and Mrs. Zac Cosner

Lectionary Readings for the Month of October

Sunday, October 6

27th Sunday in Ordinary Time

Lam. 1:1-6; Lam. 3:19-26 or Ps. 137; 2 Tim. 1:1-14;
Luke 17:5-10

Sunday, October 13

28th Sunday in Ordinary Time

Jer. 29:1, 4-7; Ps. 66:1-12; 2 Tim. 2:8-15; Luke 17:11-19

Sunday, October 20

29th Sunday in Ordinary Time

Jer. 31:27-34; Ps. 119:87-104; 2 Tim 3:14-4:5; Luke 18:1-8

Sunday, October 27

30st Sunday in Ordinary Time

Joel 2:23-32; Ps. 65; 2 Tim. 4:6-8, 16-18; Luke 18:9-14